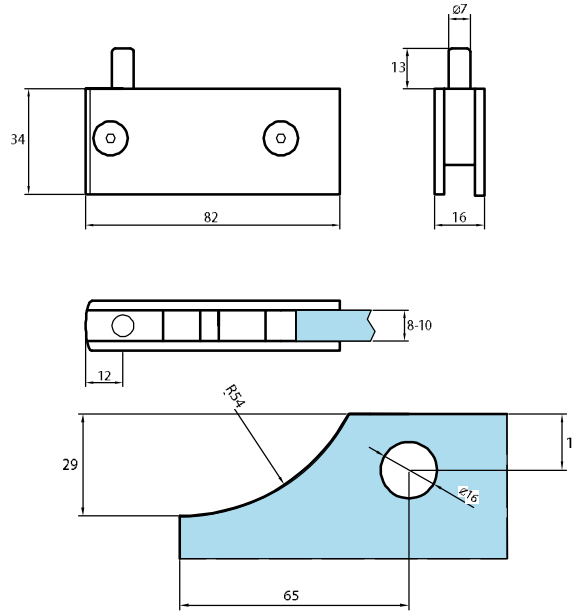




9. FURNITURE FITTINGS

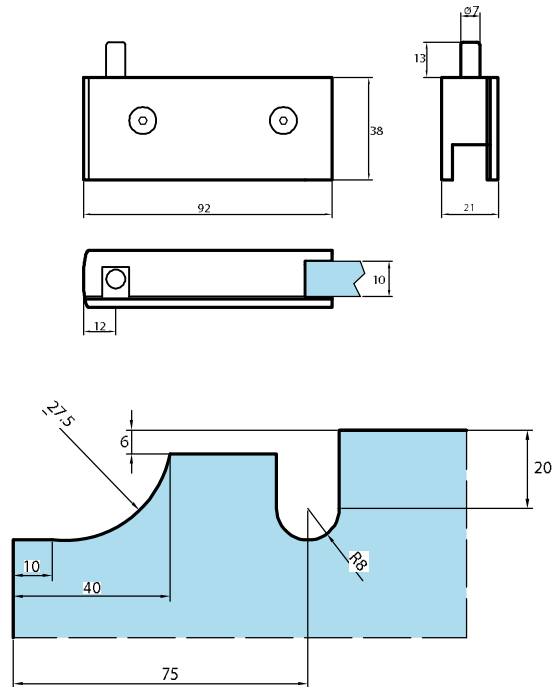
S125

Small hinge with central pin available also in the regular version, left hand
 Piccola cerniera a perno centrale anche in versione rettangolare, sinistra



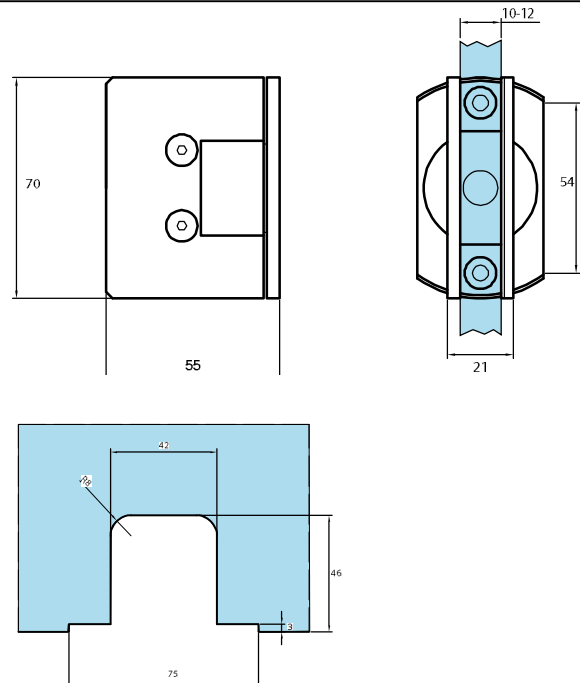
S134

Median hinge with central pin, left hand
 Cerniera media con perno centrale, sinistra

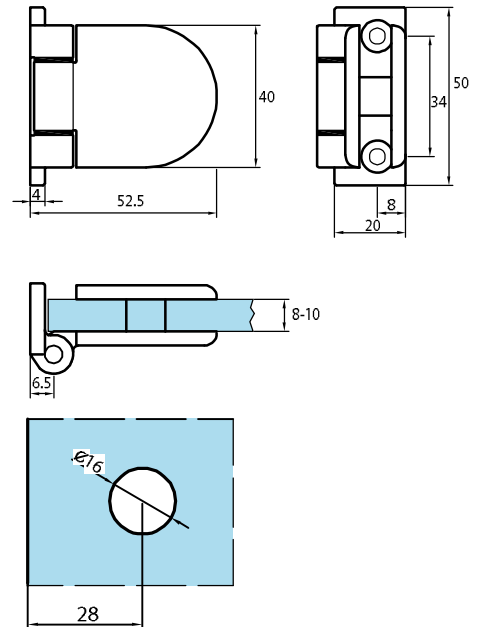


S150

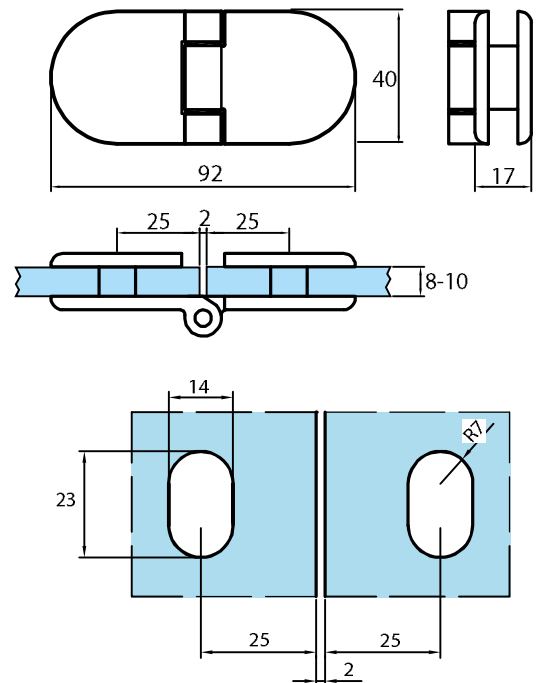
Small brass friction hinge
 Cerniera piccola a frizione in ottone



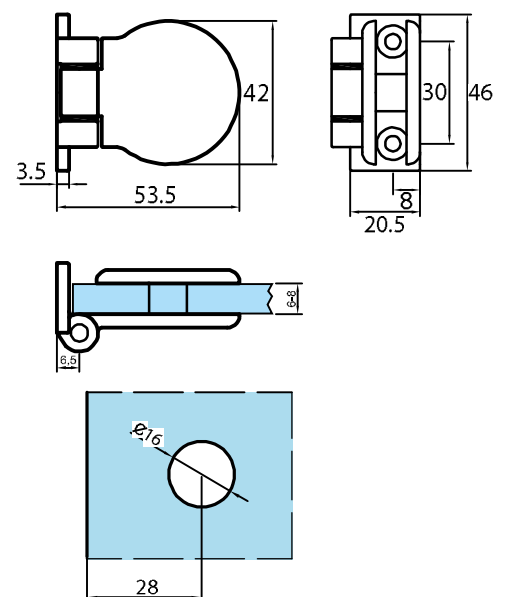
S1035
Halter hinged
Cerniera semitonda



S1035D
Double sided hinge
Cerniera semitonda

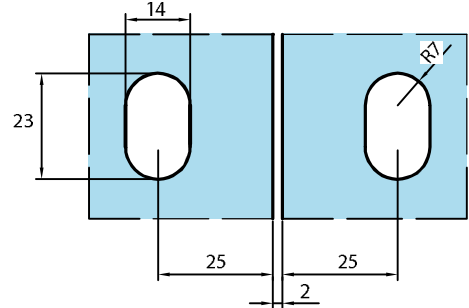
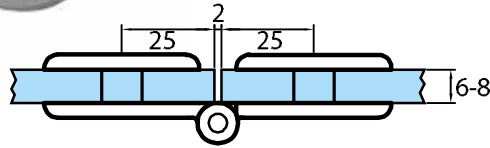
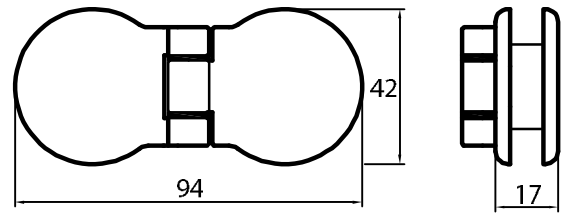


S1036
Round hinge
Cerniera tonda



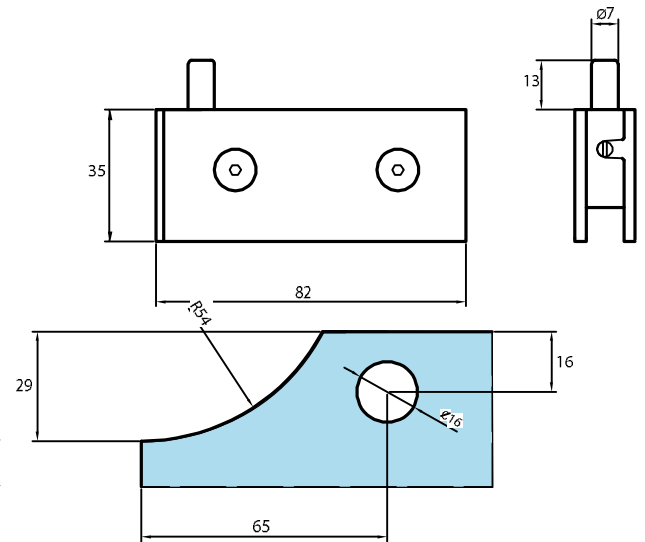
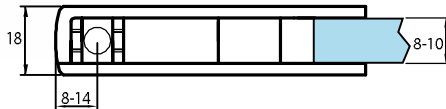
S1036D

Round double hinge
Cerniera doppia tonda



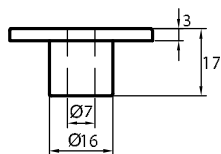
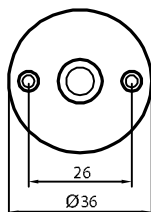
S126

Small hinge central pin regulable
Cerniera piccola a perno centrale pin regolabile



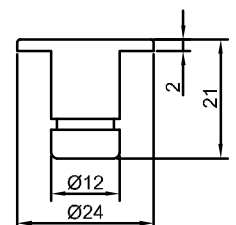
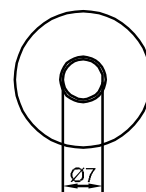
S214

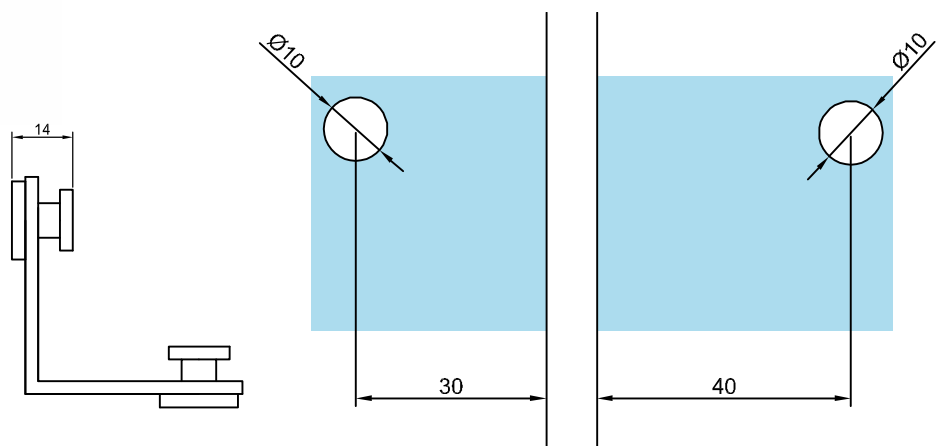
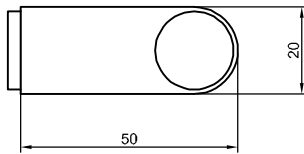
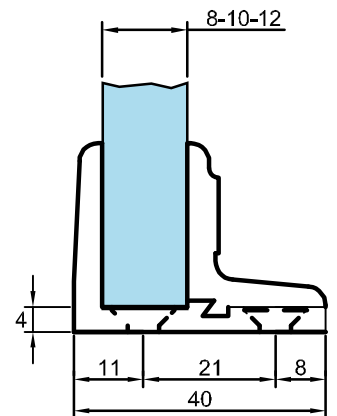
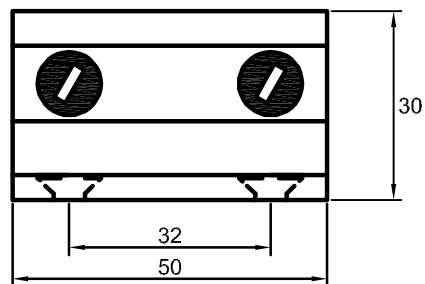
Cap with self lubricating bush
Capsula con boccia autolubrificante



S1624

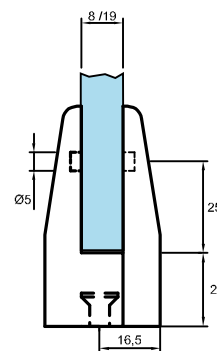
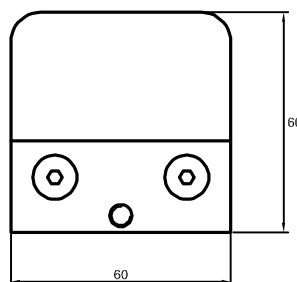
Fitting for S126-125-1415
Piletta per s126-125-1415



S1620Corner
Angolare a due parti**S1631**Clamp for glass without notch
Morsetto vetro senza tacche

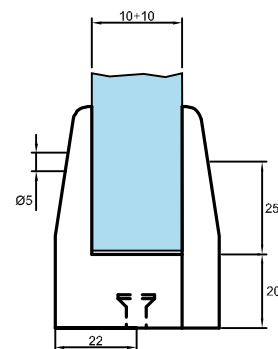
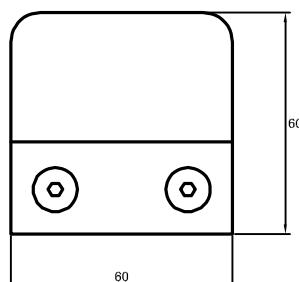
S1637

Clamp variable glass thickness
Morsetto multispessore



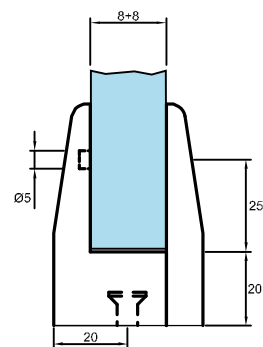
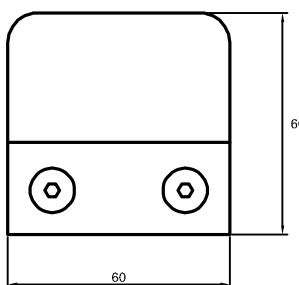
S1638

Clamp for glass 10+10
Morsetto per cristallo 10+10

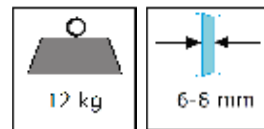


S1639

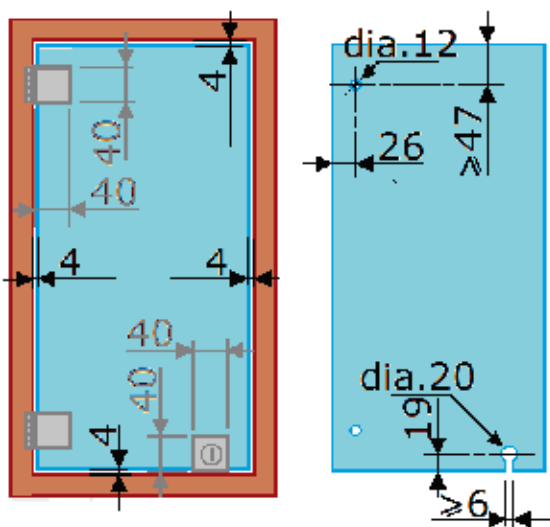
Clamp for glass 8+8
Morsetto per cristallo spessore 8 + 8



Flush-mounted panel with square hinges - CLASSIQUE LIGNE



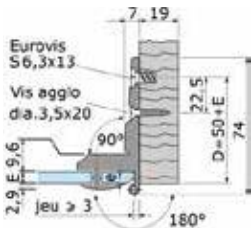
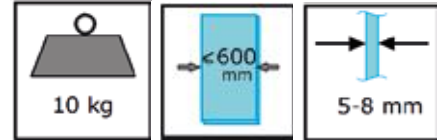
Cork wedges and screws included



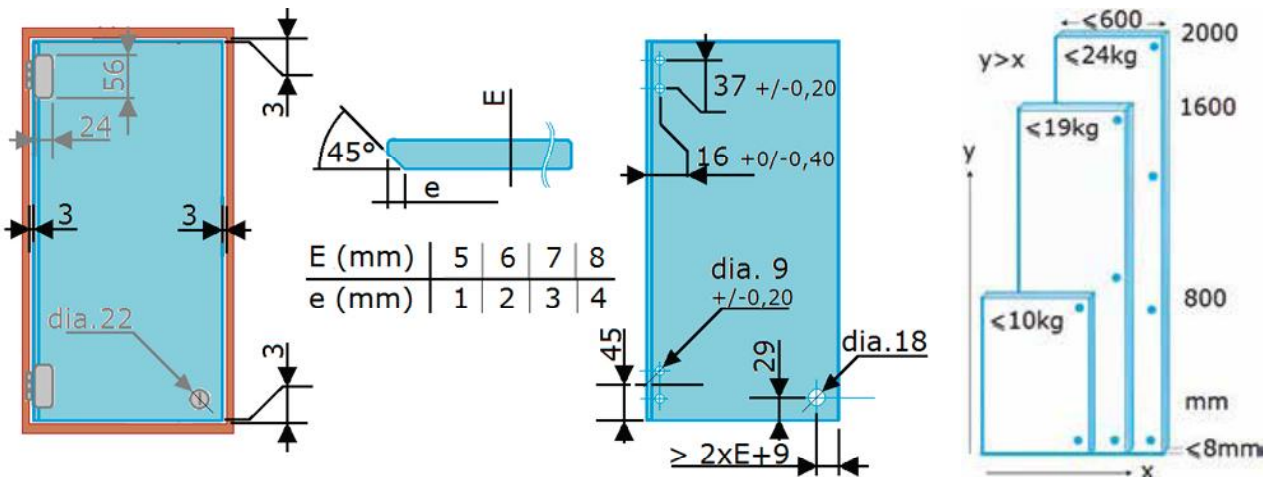
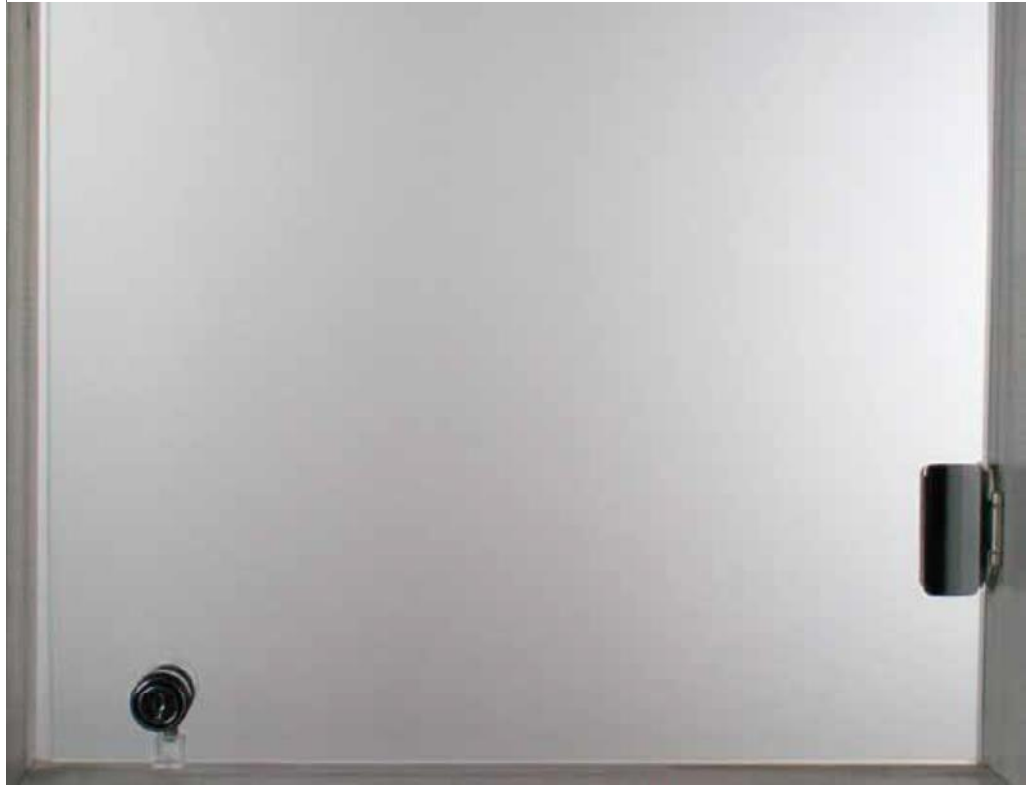
Components for showcase	Chromed	Mat chromed
Hinges for 6-8 mm glass	502 50V	502 51W
Lock n°1 without key	63803B	63804C
Key	63860P	
Lock with different key numbers	63812M	63813N

Flush-mounted panel – Hinge

PRAMETA

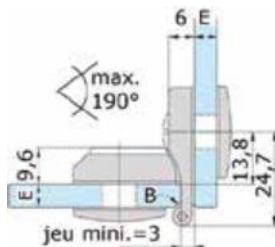
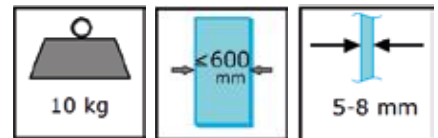


Counterplate hinge plastic wedges included

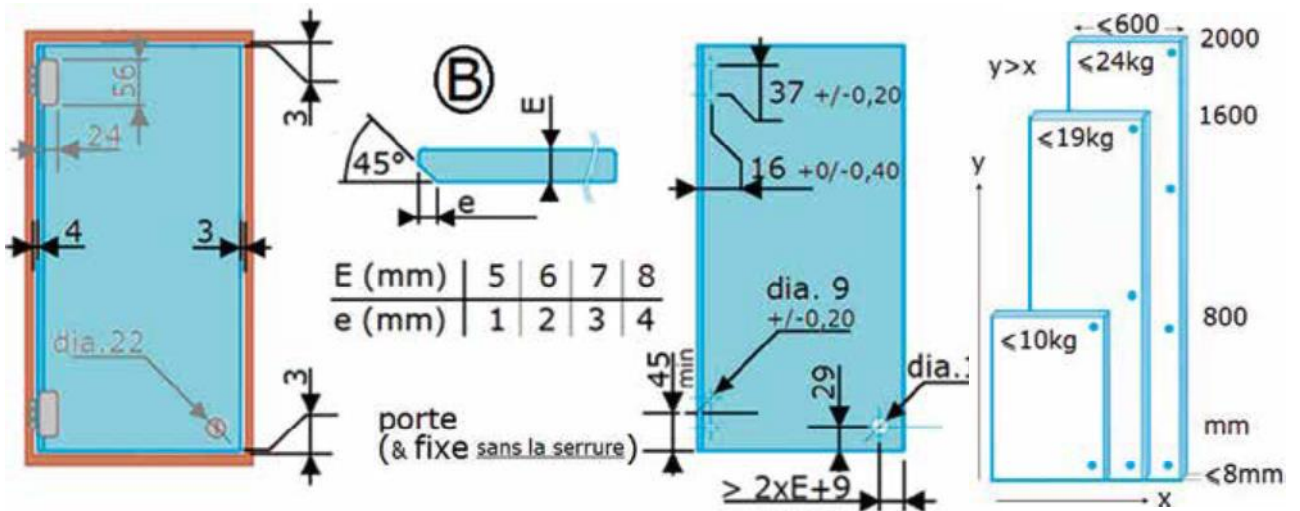
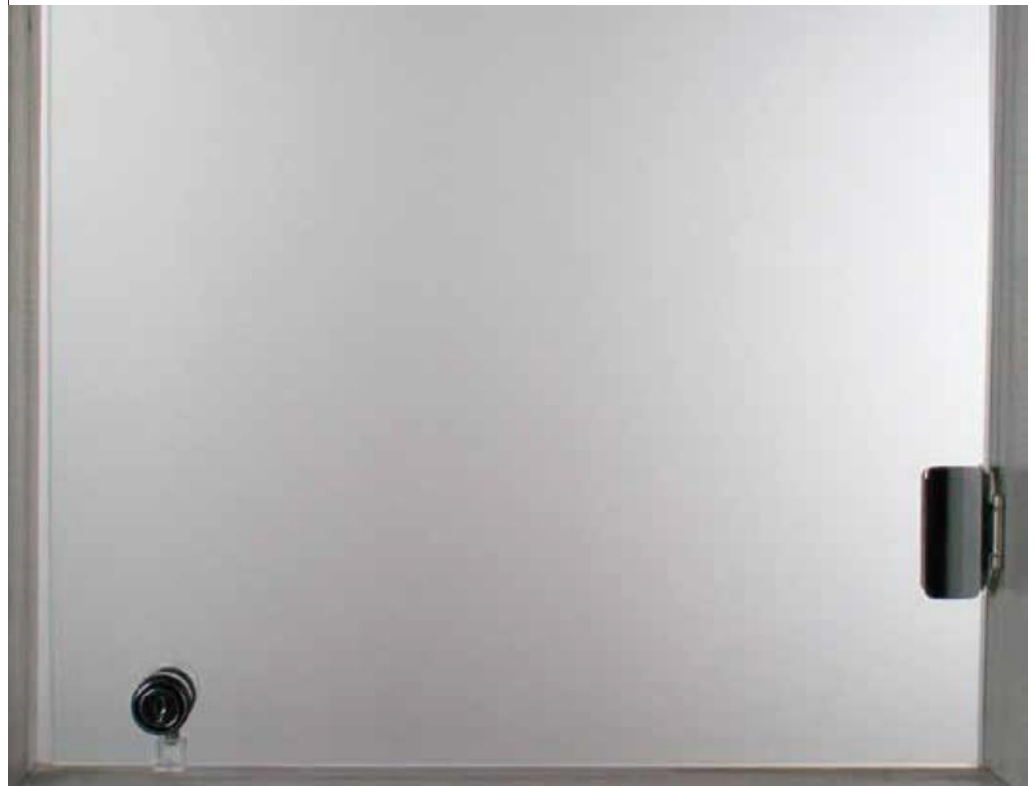


Components for showcase	Chromed	Polished anodised	Nickel satin
Hinge for flush-mounted opening panel with 3D adjustment : ±1.5mm, deepness ±2mm, lateral 2mm	639 25K		63926L
Lock n°1 without key		638 27C	
Key		638 60P	

Flush-mounted panel – Hinge

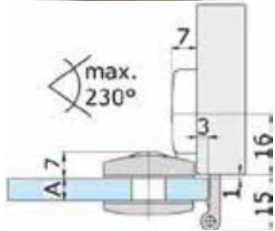
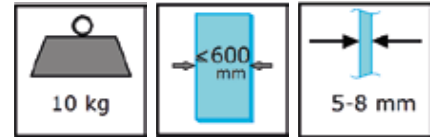


Counterplate hinge
plastic wedges included.

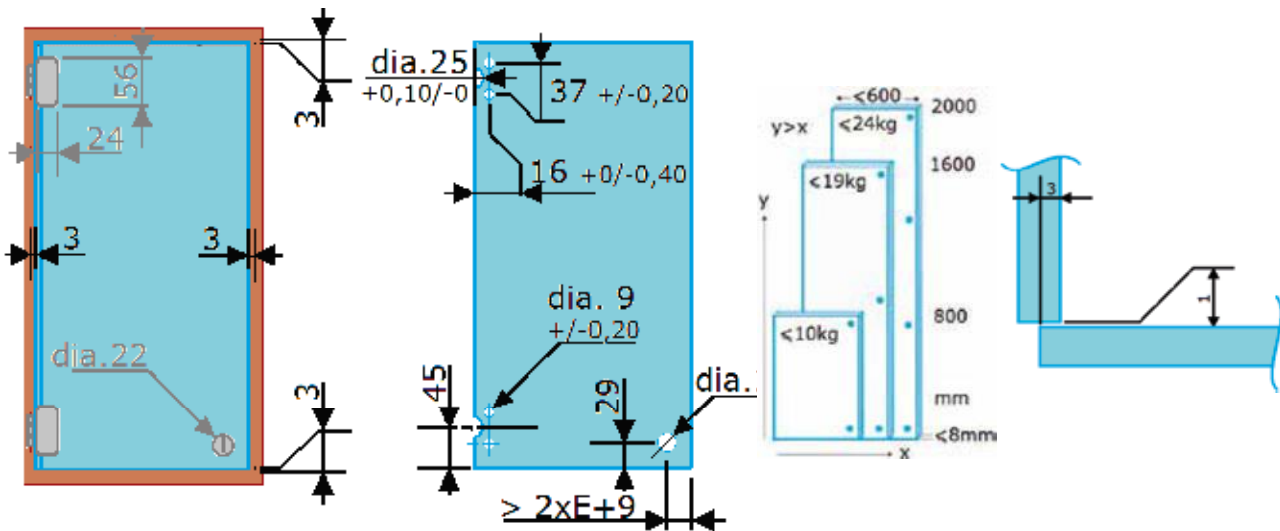


Components for showcase	Chromed	Polish anodised	Nickel satin
Hinge for flush-mounted panel with 3D adjustment : ±1, side 1 mm	639 23H		639 24J
Adaptation kit for mounting gl/gl hinges for 5-8 mm glass 639 23H/24J/27M/28N	639 29P		639 30Q
Lock n°1 without key		638 27C	
Key		638 60P	

Adjustable surface-mounted opening panel - 3mm frame surface coverage
PRAMETA.

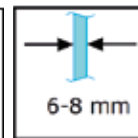
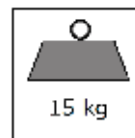


Counterplate hinge
 plastic wedges included.

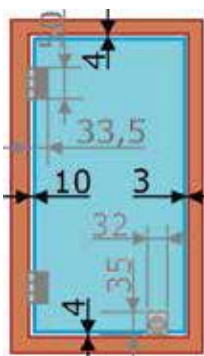


Components for showcase	Chromed	Polish anodised	Nickel satin
Adjustable hinge for surface-mounted opening panel: height ±1, side 1 mm - for 5 to 8 mm glass	639 27M		639 28N
Lock n°1 without key		638 27C	
Key		638 60P	

**Flush-mounted opening panel without notch
- Regular hinges with patented pressure
tightening screws**

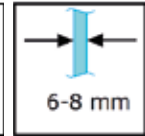
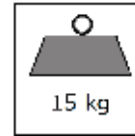


Strike plate and 2 keys included

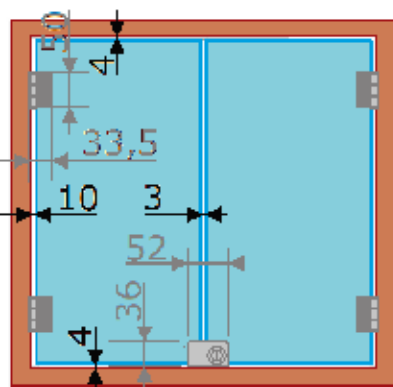


Components for showcase	Height mm	Chromed	Mat chromed
Hinge for 6-8 mm glass	50	500 51D	500 55J
	25	500 53G	500 56K
Lock n°1 without notch		639 84Y	639 85Z
Lock with different key numbers		639 78S	

**Flush-mounted opening panel without notch -
Double door with single locking for both doors
Rectangular brass hinges with patented
pressure tightening screws**

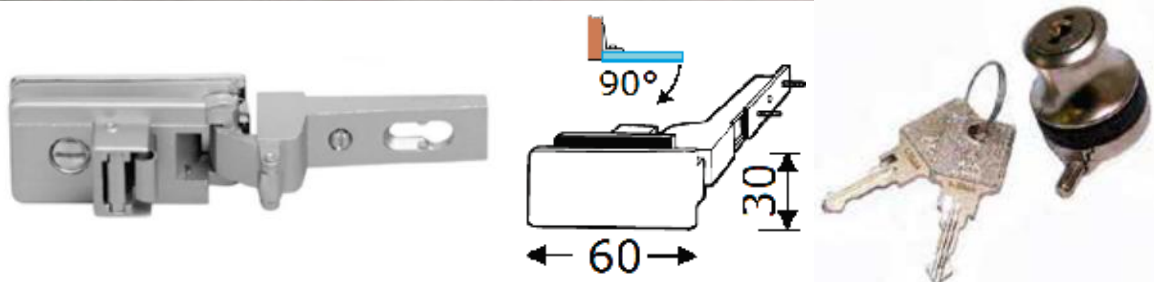
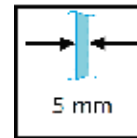
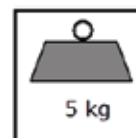


Strike plate and 2 keys included

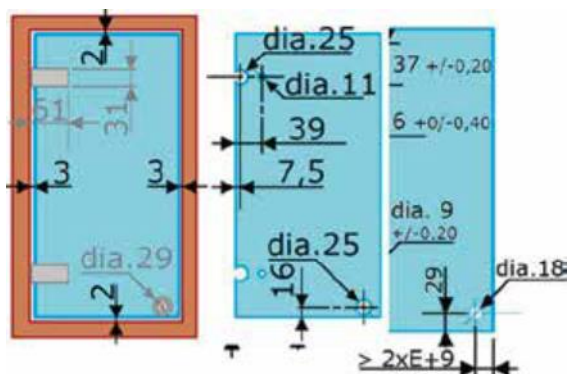


Components for showcase	Height mm	chromed	Mat chromed
Hinge for 6-8 mm glass	50	500 51D	500 55J
	25	500 53G	500 56K
Lock n°1 without notch for double door		639 86A	

Flush-mounted door – Horizontal and rectangular hinge

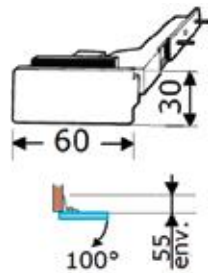
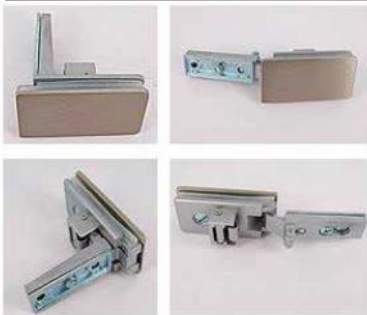
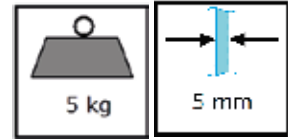


2 keys included



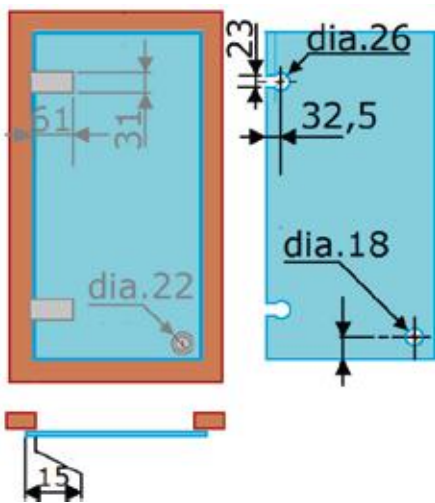
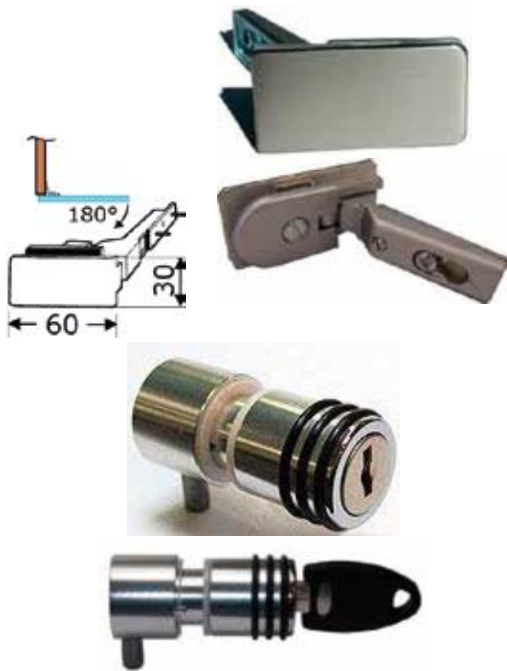
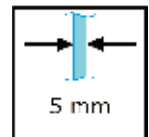
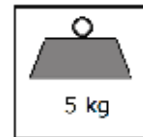
Components for showcase	Nickel satin
Hinge for 5 mm glass	640 35D
Lock n°1 without key	640 56B
key	640 57C

**Surface-mounted panel –
Rectangular hinge / 7.5mm surface coverage**



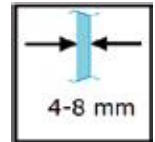
	Satin nickel
Hinge for 5 mm glass	640 39J
Lock with 2 different key numbers	638 31H

Surface-mounted panel – Rectangular hinge / 15mm surface coverage



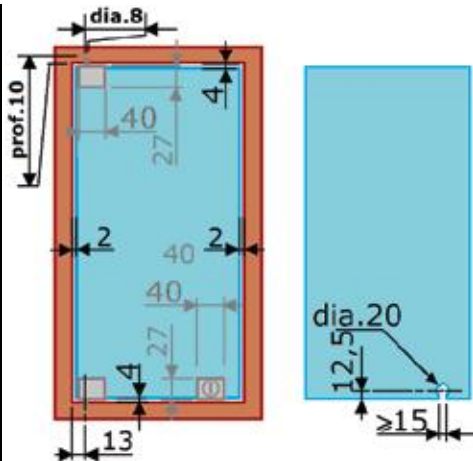
Components for showcase	Nickel satin
Hinge for 5 mm glass	640 39J
Lock n°1 without key	638 28D
Key	638 60P
Lock with 2 different key numbers	63831H

Pivot hinge without notch with patented tightening screws



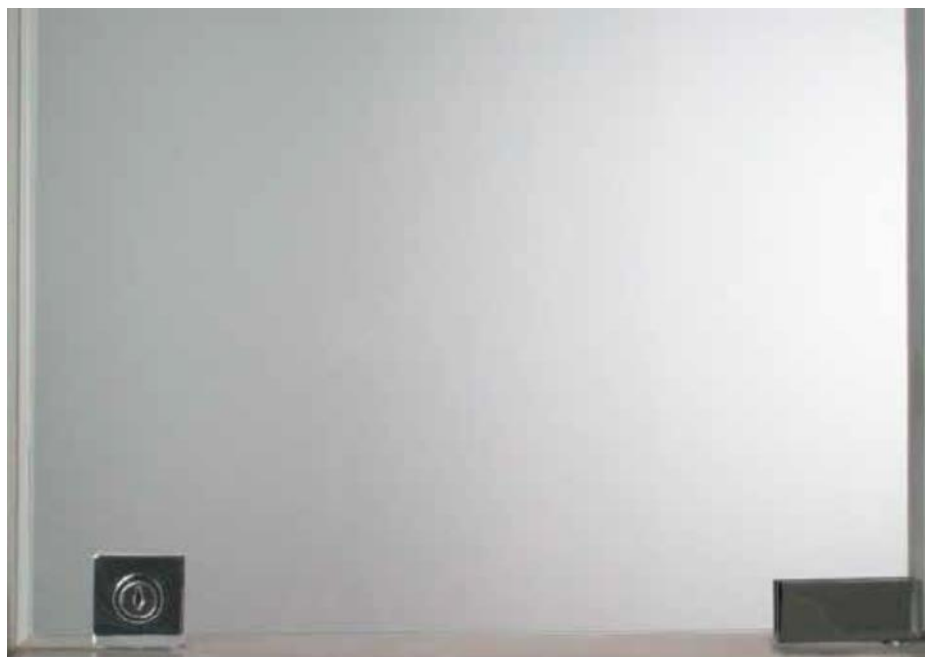
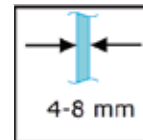
Thickness	Wid. max
4	930 mm
5	830 mm
6	760 mm
8	835 mm

Maximum widness of the gate depending on glass thickness



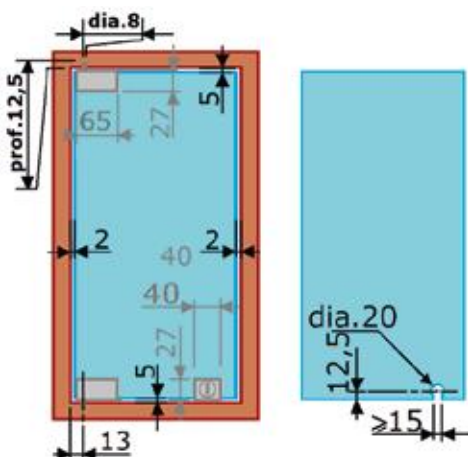
Components for showcase	Chromed	Mat chromed
Pivot Hinge for 4-8 mm glass	630 29L	630 72H
Lock n°1 without key	638 00Y	638 01Z
key	638 60P	
Lock with different key numbers	638 09J	638 10K

Pivot hinge without notch with patented tightening screws for wide doors



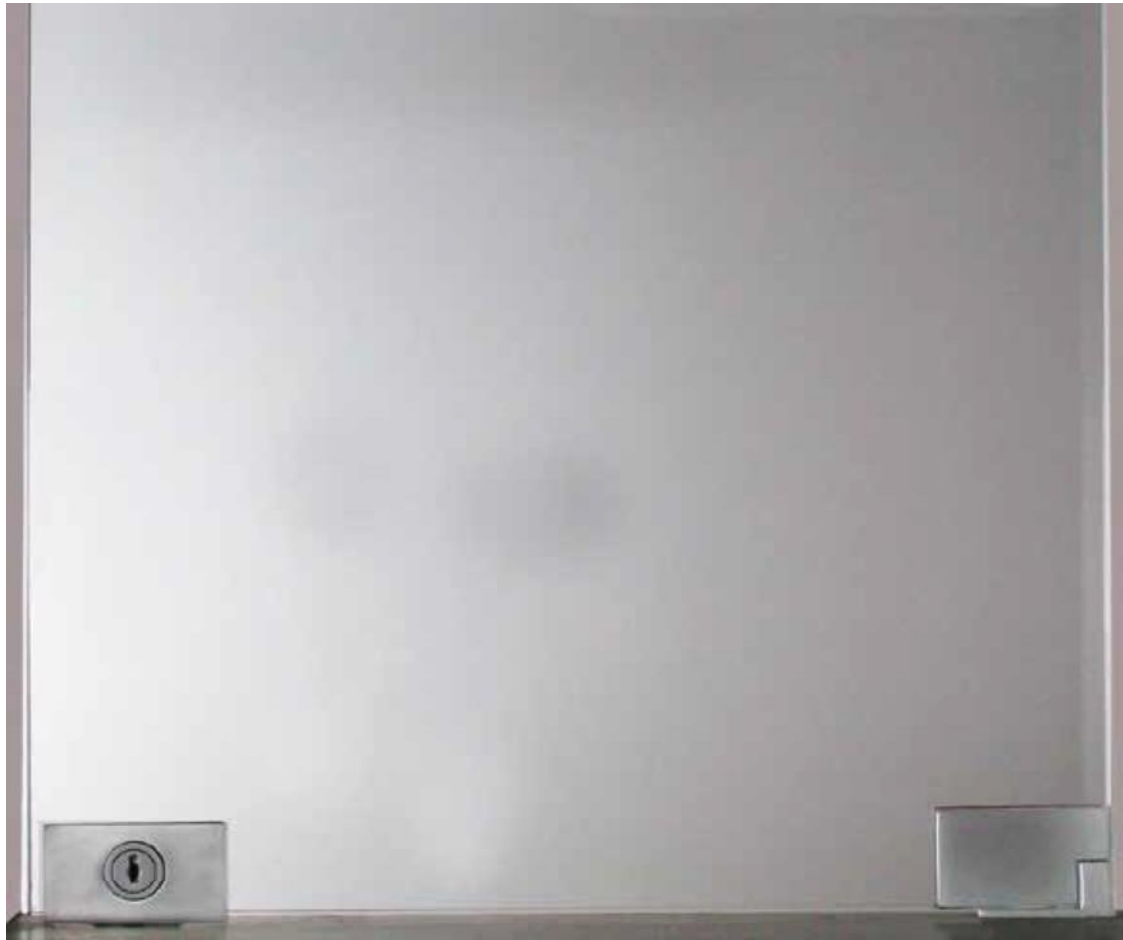
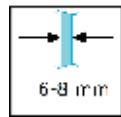
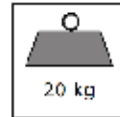
Thickness	Wid. max
4	1.185 mm
5	1.060 mm
6	965 mm
8	835 mm

Maximum widness of the gate depending on glass thickness



Components for showcase	Chromed	Mat chromed
Pivot hinge for 4-8 mm glass	630 15N	630 16P
Lock n°1 without key	638 00Y	638 01Z
key	638 60P	
Lock with different key numbers	638 09J	638 10K

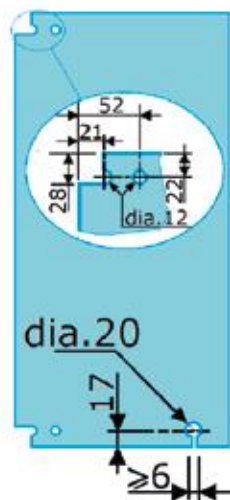
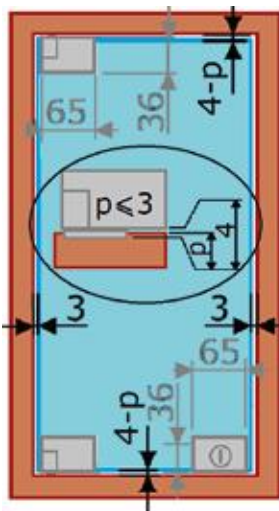
Pivot hinges for notched glass with timber plate **PRESTIGE**



Cork wedges

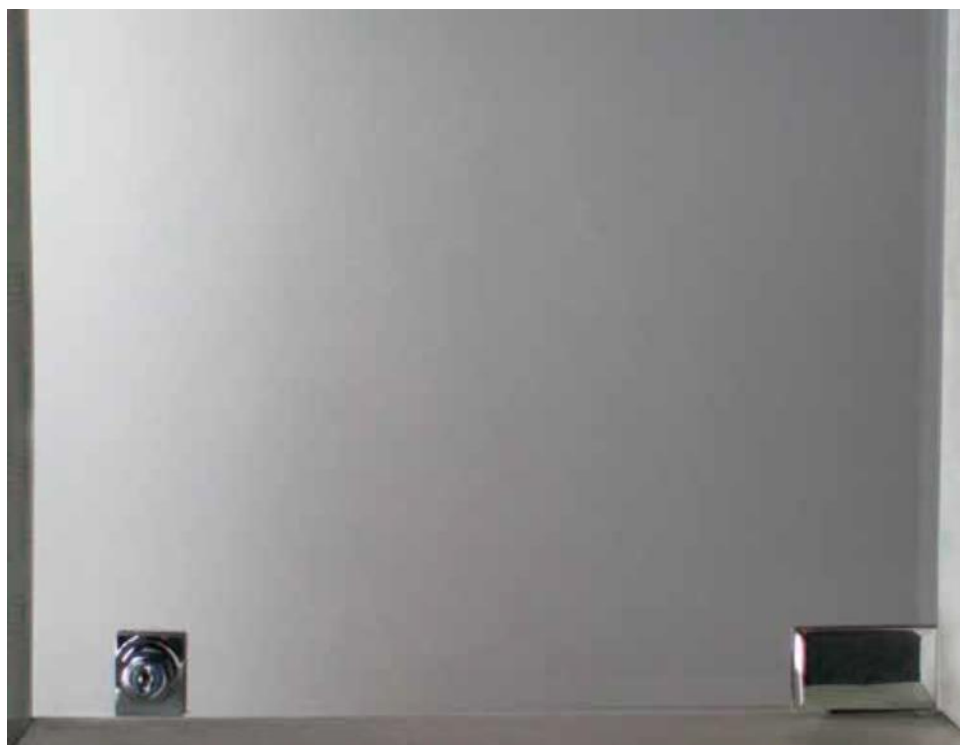
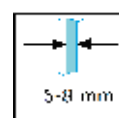
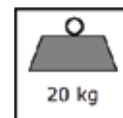


2 keys included with standard cylinder - different key numbers.



Components for showcase	Chromed	Mat chromed
Hinge for 6-8 mm glass	640 11C	
Lock n°1 without key	638 06F	638 07G
Key	638 60P	
Lock with 2 different key numbers	638 15Q	638 16R

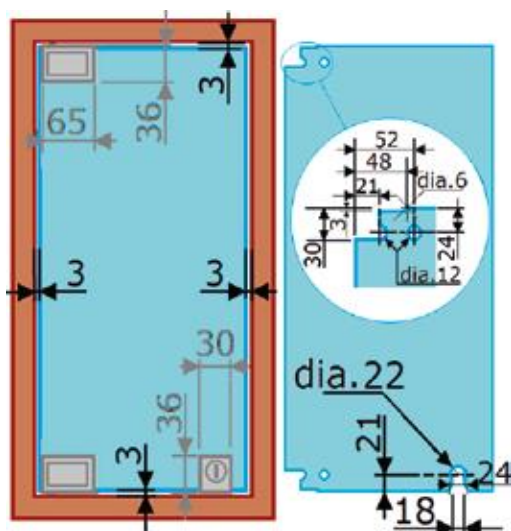
Pivot hinges for notched glass with timber plate
DESIGN : rounded edges.



Cork wedges

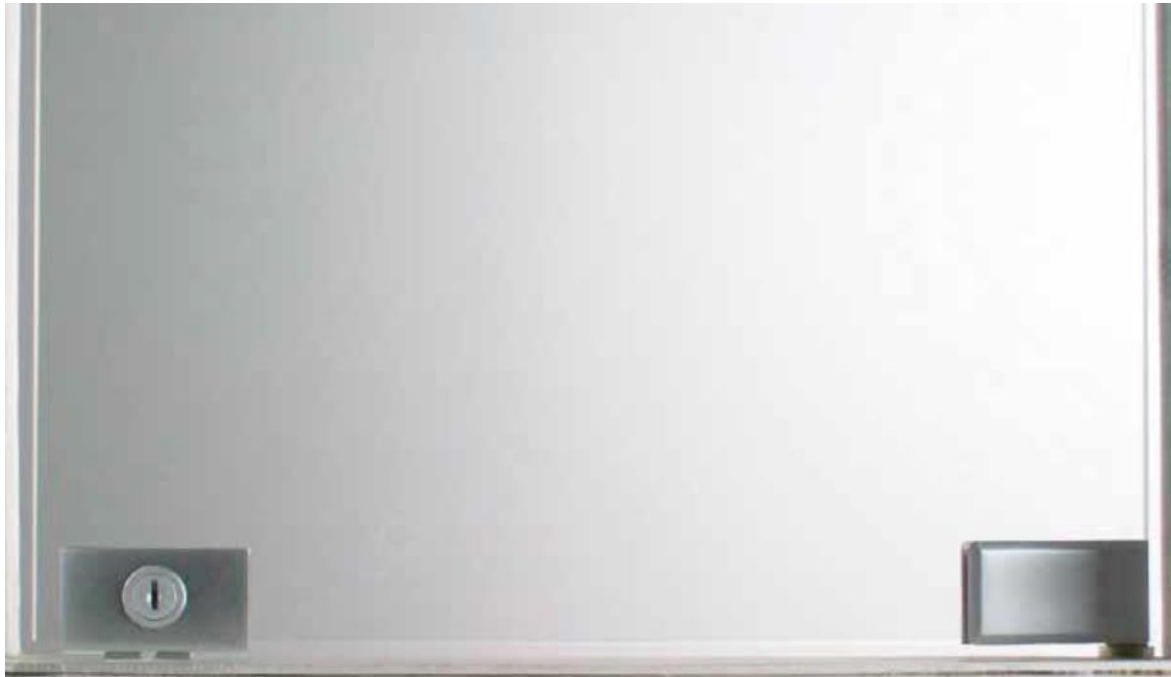
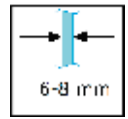
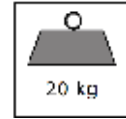


2 keys included



Component for showcase	Chromed	Mat chromed
Pivot hinge with rounded edge for 6-8 mm glass	639 50M	639 51N
Lock n°1	640 44P	640 46R
Lock with 2 different key numbers	640 48T	640 50V

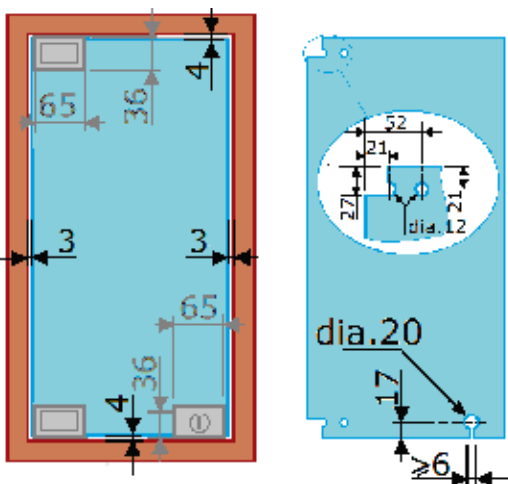
Pivot hinges for notched glass with flushed pivot **DESIGN** : rounded edges.



Cork wedges

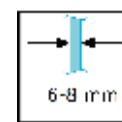
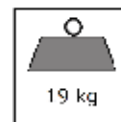


2 keys included with standard cylinder - different key numbers.



Components for showcase	Chromed	Mat chromed
Pivot hinge with rounded edges for 6-8 mm glass	639 53Q	639 54R
Lock n°1 without key	638 06F	638 07G
Key for lock	638 60P	
Lock with 2 different key numbers	638 15Q	638 16R

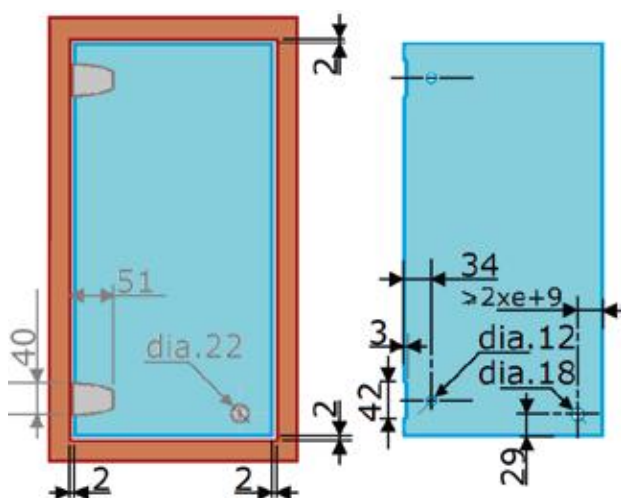
Founded edges and curved surface VENUS hinge and bolt lock knob



cork wedges

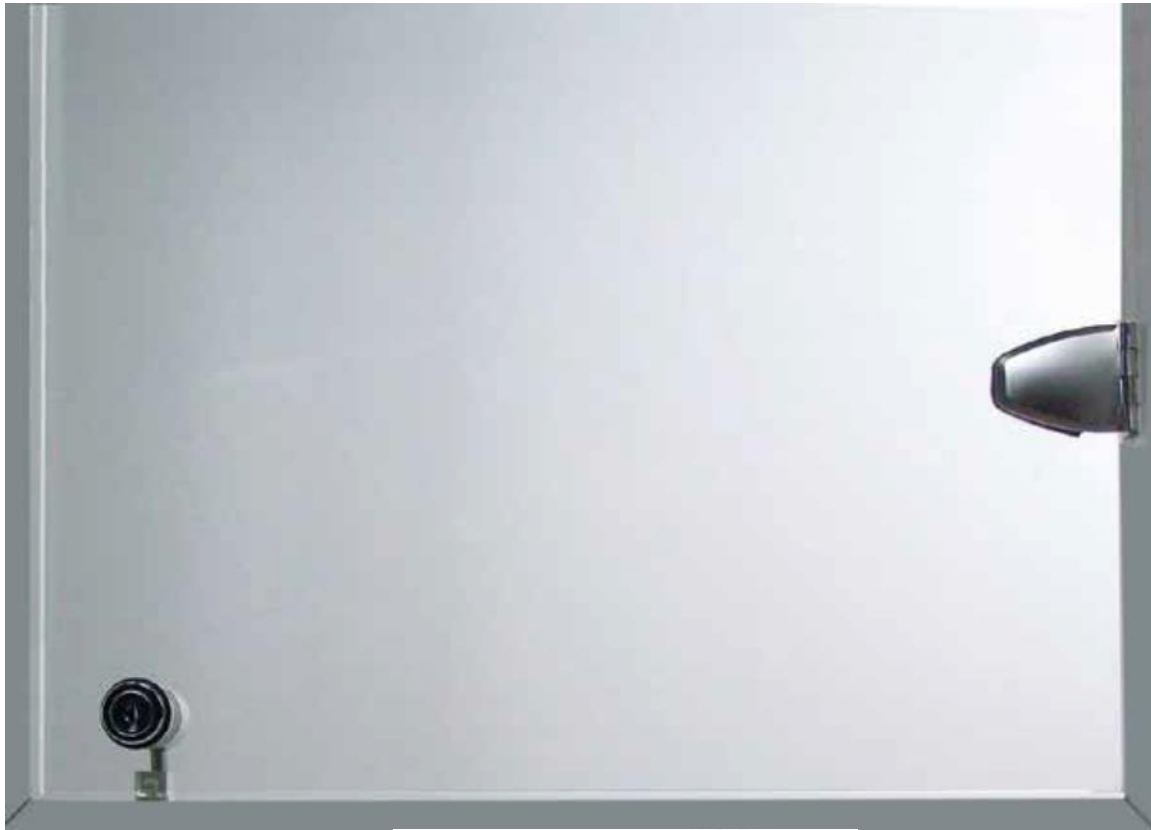
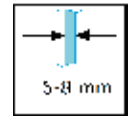
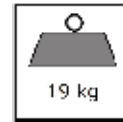


2 keys included

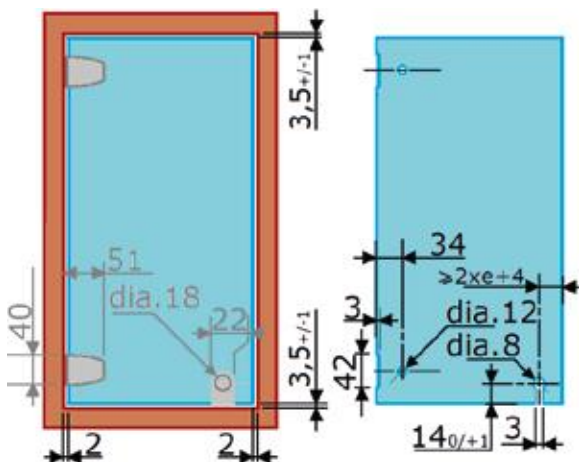
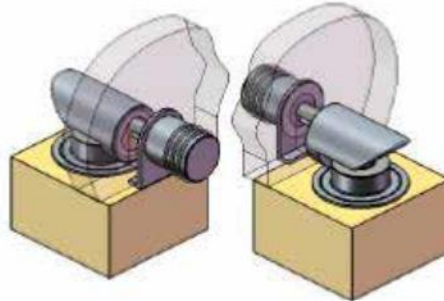


Components for showcase	Chromed	Polish anodised	Mat chromed	Anodised stainless finish
Hinge for 6-8 mm glass	502 36F		502 37G	
Lock n°1 without key		638 27C		
Key		638 60P		
Lock with 2 different key numbers		638 30G		638 31H

Founded edges and curved surface **VENUS** hinge and electronic access control



Cork wedges



See description on Commercial data sheet

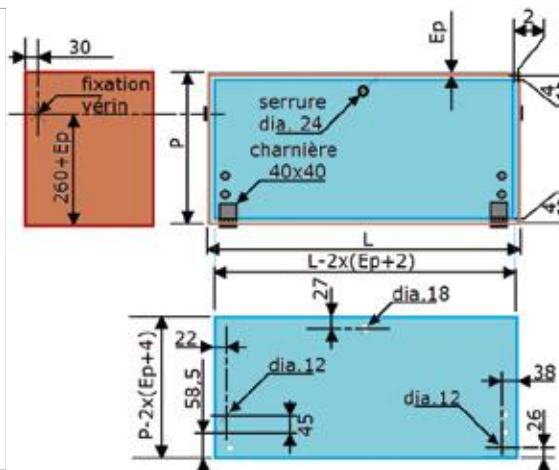
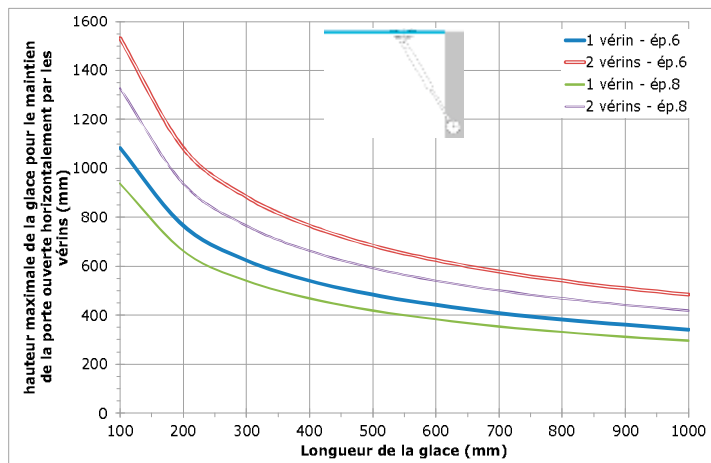
Components for showcase	Chromé	Mat chromed	Anodised stainless finish
Hinges	502 36F	502 37G	
Knob strike			642 80V
Electromagnetic lock	642 74P		
socket	642 81W		

Rounded hinge and curved surface Electromagnetic locks designed for access control: the bolt remains extended (door closed) by default when the power supply is absent and retracts when the locks are powered by 15VDC (600-800 mA). Door closed, the bolt's dry contact in the strike provided reliable and secure closure detection, doing away with the need to install a remote detector.

The closure contact is managed by the electronics of the ALTEA access contrsystem (see 64297P or 64269J).

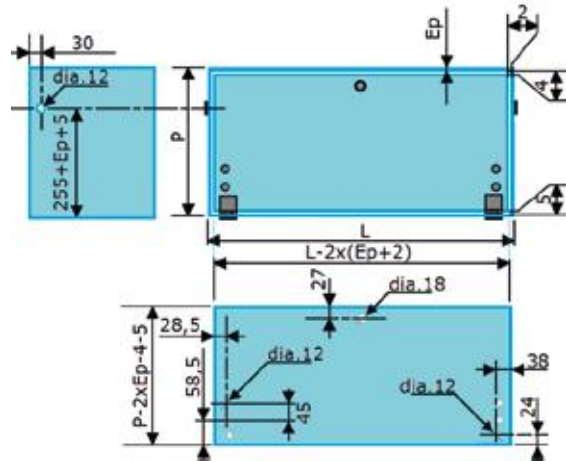
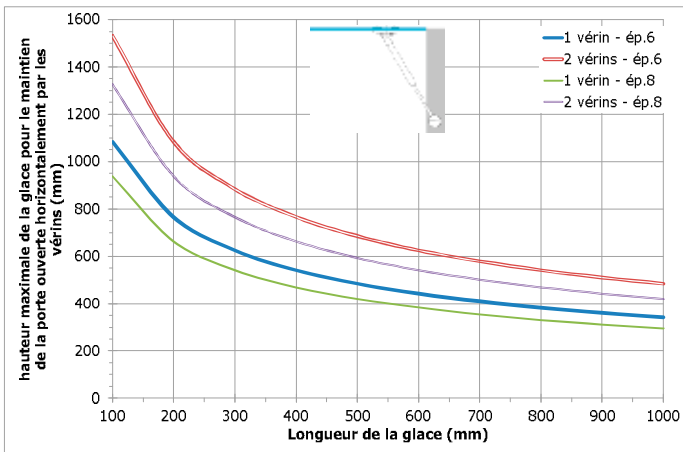
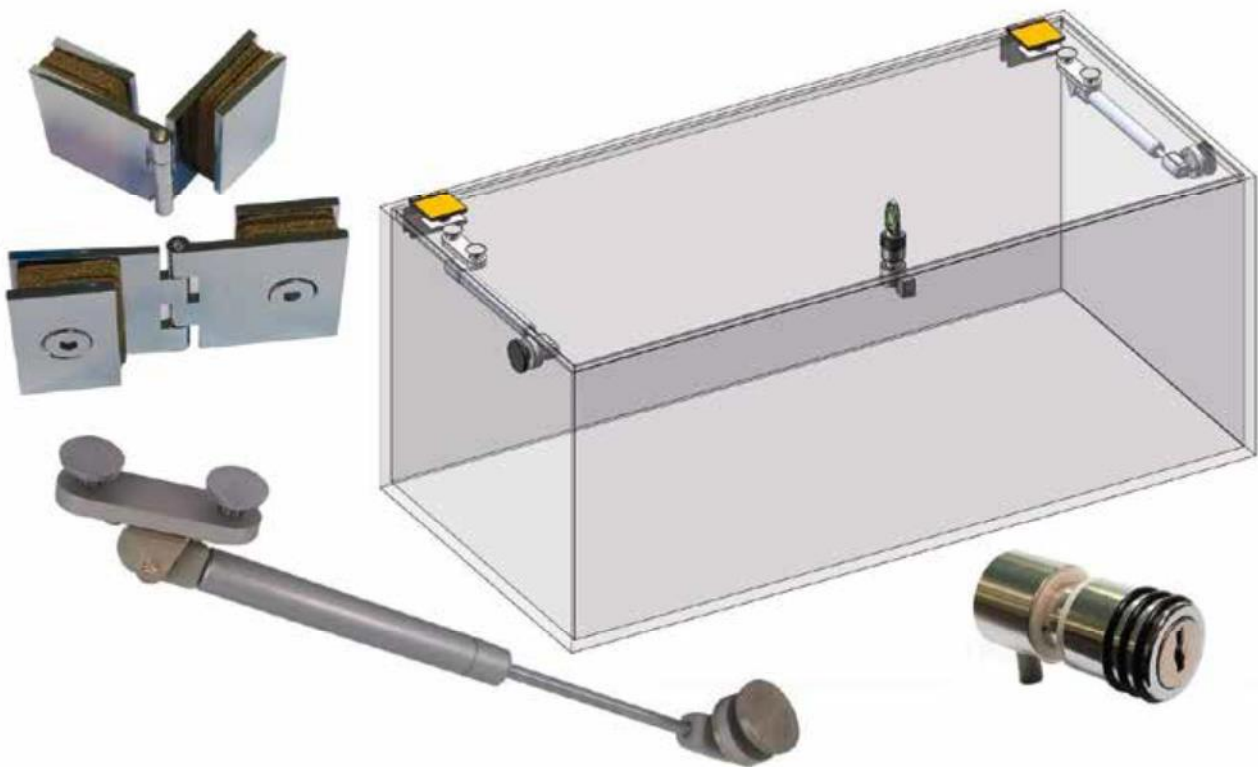
- For swinging or sliding doors (see 603-604), drawers of store showcases or furniture,
- To replace the magnetic suction cups and the door mechanical locks,
- For cash registers

Drop front hinge and gas cylinder compas with wooden frame CLASSIQUE LINE



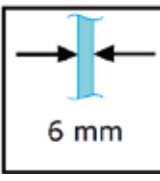
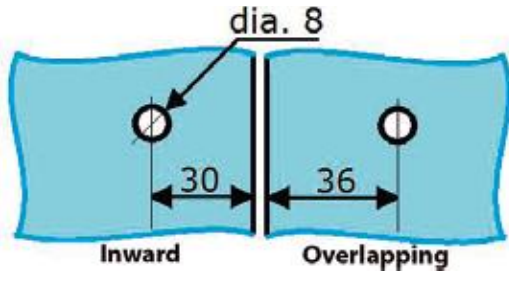


	Chromed	Polished anodised	Mat chromed	Anodised stainless finish
hinges	502 50V		502 51W	
Lock n°1 without key		638 27C		
key	638 60P			
Cam lock with different key numbers		638 30G		638 31H
Gas cylinder compas for glass door			639 90F + 639 91G	

Drop front hinge and gas cylinder compas with glass frame CLASSIQUE LINE

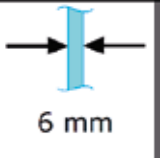


	Polish anodised	Mat chromed	Anodised stainless finish
Hinges		502 60G	
Lock n°1 without key	638 27C		
key		638 60P	
Lock with different key numbers	638 30G		638 31H
Gas cylinder for glass door		639 90F + 639 91G	


Glass fastener family 637

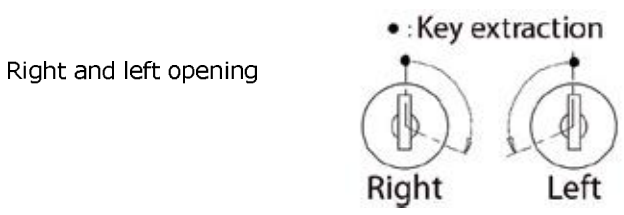
 <p>6 mm</p>	2 fasteners	3 fasteners	
			
Chromed	637 05V	637 07X	
galvanized	637 13D	637 16H	
gilded	637 06W		

Shelf-brackets


 <p>6 mm</p>	Adjustable	637 02S	
---	------------	---------	---

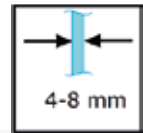
Came lock cylinders

key		Key N°	Cylinders for showcases – 2000 combinations , dia 18x25							
						Left opening*			Different keys	
			Chromed	Alu mat	gilded	Chromed	Alu mat	left		
638 60P		1	031 11H	031 12J	031 13K	031 71X	031 72Y	031 10G	031 20S	
031 09F		2	031 21T	031 22U	031 23V					
031 19R		3	031 31D	031 32F	031 33G					
031 29B		4	031 41Q	031 42R	031 43S					
031 39N		5	031 51A	031 52B	031 53C					
031 49Y		6	031 61M	031 62N						

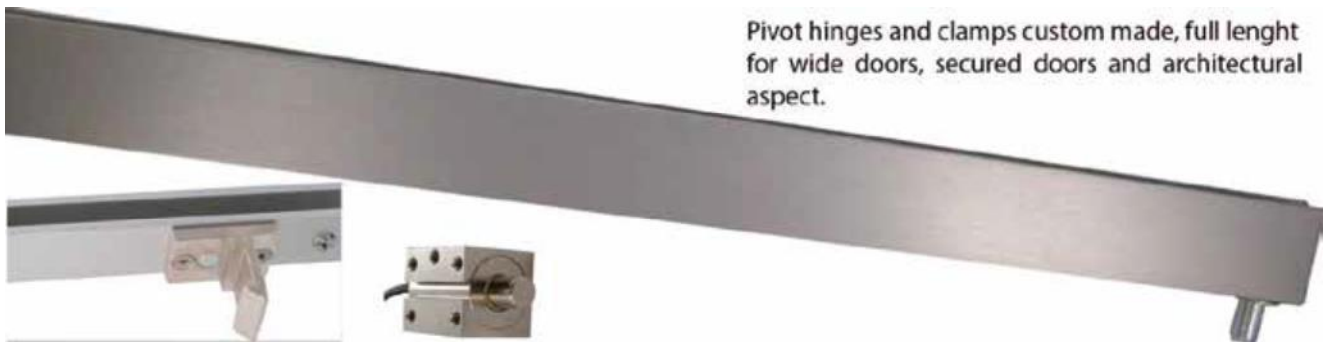


Kaba security cylinders dia.18x28

	Chromed 641 87U	Mat chromed 641 86T
	Cylinder KABA security with different key numbers	Cylinder KABA security with different key numbers

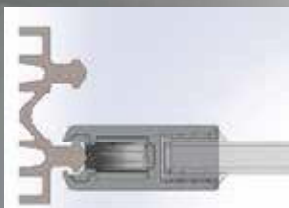


Full length custom made pivot hinge

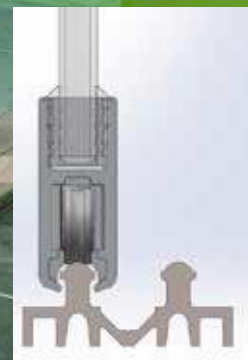


Pivot hinges and clamps custom made, full length for wide doors, secured doors and architectural aspect.

Ref. 629 99 on demande



Security track 603 63N + sliding track + roller + gasket seal



Lock: pin + latch
603 50Y



- Track : 603 63N
- Slide : 603 69U
- Roller : 603 43R
- Gasket seal :
603 57Q

Tel : +(33) (0)1.60.03.62.00

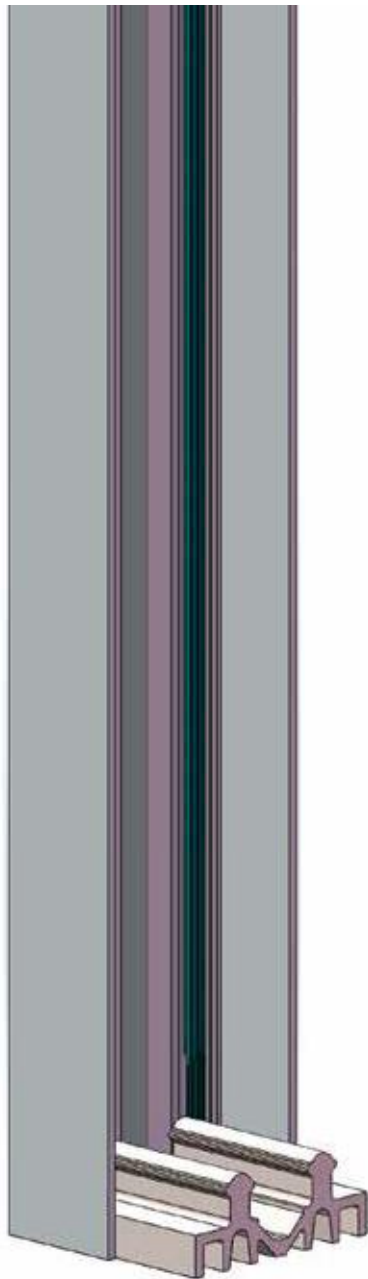
securitrack

ONLINE CONFIGURATOR

https://www.adler-sa.fr/projets/vitrine/vitrine_1.asp

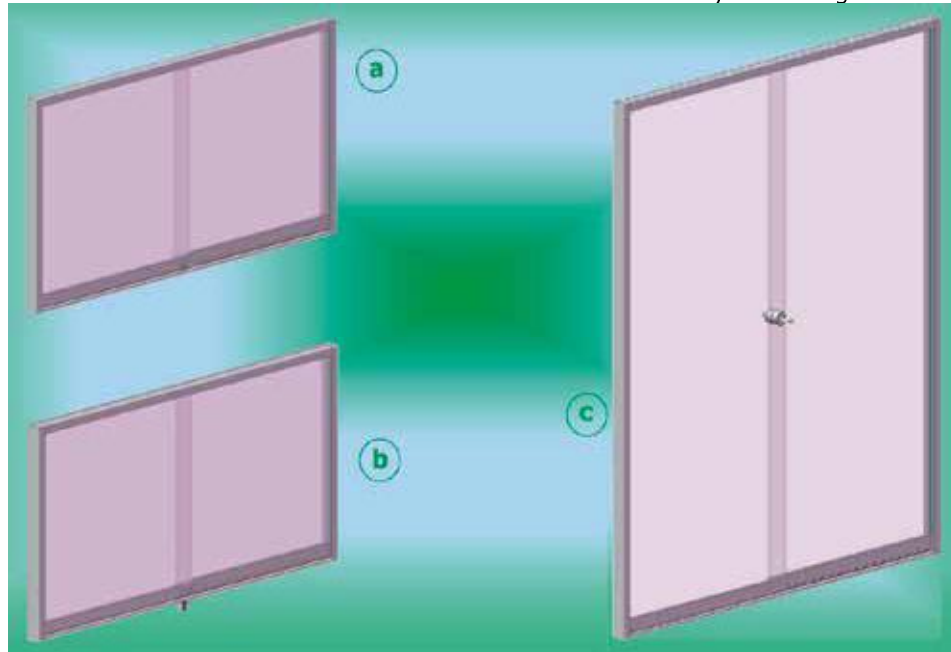
Façade partition systems

The 3 models below illustrate a part of the possible variants of SECURITRACK sliding door installation. All using vertical tracks to : 1) to hide the defects of squareness of furniture 2) to secure the closure of the window against the hooking and bending of the doors 3) to protect the window of dust with eyelashes PVC joints.



Classical assembly of Securitrack flushed lock in the shoe section.

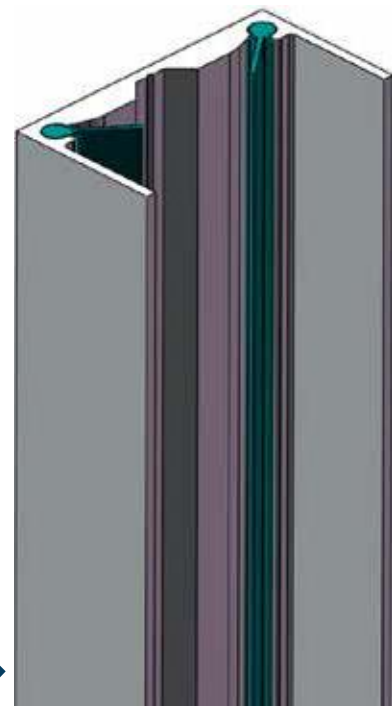
Main entrance secured by breast high lock.



A cable free system with electromagnetic lock

Securitrack implements several fast Adler® mechanical and electromagnetic locking solutions always miniaturized, even invisible and very secure.

Vertical profil showing adjustment with lower track

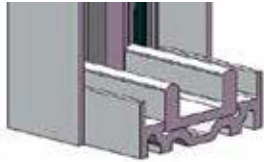


Vertical profile with seals →

SECURITRACK

Choosing the right track

A perfect finish on the sides



The side slide allows a total framing of the showcase without an additional cut.

If §2 = electromagnetic lock
If vertical profiles
If showcases to be followed

Easy care



The lower «U» track : for glass food showcase

N/A
N/A
N/A

To be RAL painted



The «U»profile embeded in its «U» track support : To be lacquered with the furniture

N/A
POSSIBLE
N/A

Securised



The 'clover' section : for securised shop showcases.

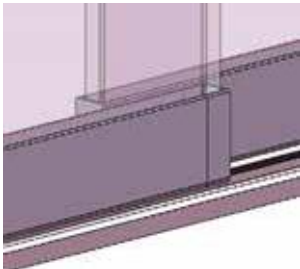
POSSIBLE
POSSIBLE
POSSIBLE

Profiles		Lenght	Natural anodized	Sale unit	Lenght	BSS	PSS	GSS	Sale unit
Upper profile		4m20	60366R	PCE	2.80	60331C	*60331C	60510X	PCE
			60367S	Pack of 12					
Sliding profile	60369U		PCE	60378D		60338L	60513A	PCE	
	60370V		Pack of 12						
Security track	60363N		PCE	60379F		*60333F	60512Z	PCE	
	60364P		Pack of 16						
Lower « U » track	60380G		PCE				60514B	PCE	
	60381H		Pack of 16						
Support for « U » track	60383K		PCE						
	60384L		Pack of 16						
Guiding profile PVC		2 m	60396Y	PCE	For shoe section mounted on 'U' track 60380G				
Side vertical profile		60372X	PCE		60386N	60329A	60511Y	PCE	
		60373Y	Pack of 16						
Seal for side vertical profile		au m PVC	60312H	Profile silicone used for sealing window and soft closing door stop.					
Gasket seal		1m50	60367S	For simple construction with of 6 mm glass					
		2m50	60357Q						

* on request 1m45

Choosing the right lock (end section)

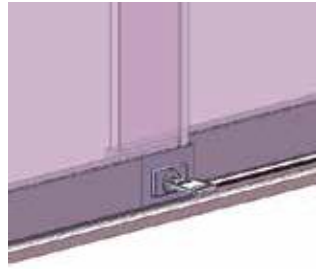
No lock



Simple end-shoe sections :

To center the glass panel with a smooth and silent guiding.

Integrated lock



Mechanical locking :

Discrete flushed flat façade.
Wafer lock

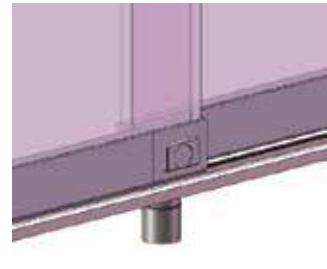
Centre lock



Accessible lock :

Anti-intrusion : glasses can't be pulled apart.
Wafer lock



electromagnetic lock




Invisible electromagnetic locking system :

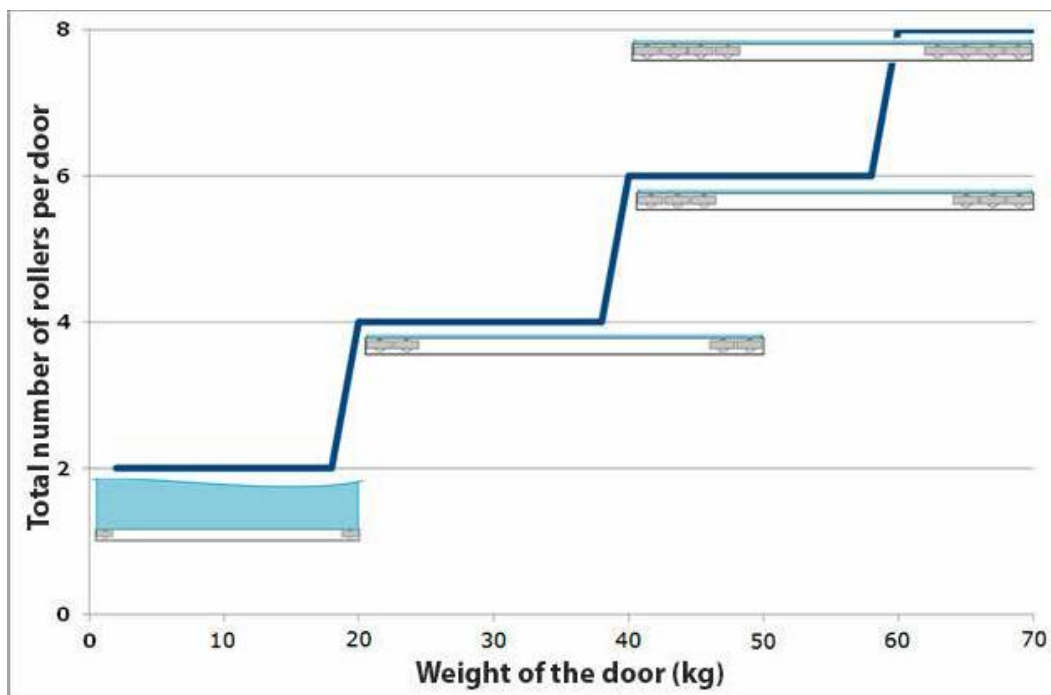
For a better detection of :
- unlocked doors
- burglary attempt
- record of the events



Selection of accessories for each case

Accessories		Matt chromed	Natural anodized		BSS	PSS	GSS	S.U.
Set of end-parts			60349X		60348W	60340N	60347V	x 4
Silent guiding. Avoid glass from sliding in the profile. Built in plastic stopper								
Kit end-parts locker			60354C	same key	60357G	60391T	60356F	x 1
			60350Y	different key	60353B	60390S	60352A	x 1
Key N°1			60398A	Key n°2 and 3 on request				x 1
All the benefits of simple tips 60340N - 60347V - 60349X - 60348W with a miniaturized lock patented by Adler for an aesthetic and ergonomic façade --> no protrusion								
Safety lock 90°			60344S	same key	60345T		60346U	x 1
		Drilling Ø 26 - 28	60375A	different key	60376B			x 1
Key n°11			63861Q	Key n°12 to 15 on request				x 1
Electromagnetic lock			64274P + 60358H		60361L	60359J	60360K	x 1
Ratchet lock				same key	60083J	60081G		x 1
Vibration Damper			60485V			For glass thickness 6-8-44.2		x 1
A unique model of anti-rattle clip on 6,8,44.2 glass. Guidance in the upper profile being dissociated from the tightening of the clamp remains perfect whatever fluctuations of glass thickness.								

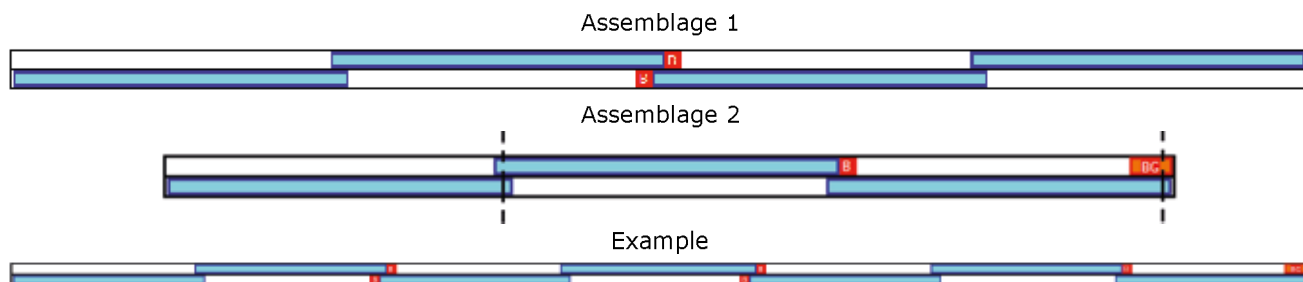
SECURITRACK

Accessories		Natural anodized		S.U.
Nylon roller		60343R	A unique roller for a smooth movement. High load capacity. No track profile wear.	x 1
<i>For maximum stability, the rollers must be distributed to each of the 2 ends of the profile (no roller in the middle)</i>				









Track stop		B	60326X		<i>To be used with a 'clover' section</i>	x 1
Track stop with latch		BG	60387P			x 1

Roller track systems with 3 or more sliding doors



Accessories : ordinary solutions

Accessories	Natural anodized	Comments	Nickel	PSS	GSS	S.U.
Simple end-part 	60464X					x 1
Reversible mechanical lock 		same key		60487X 60482S	60483T	x 1
	60481R	different key				x 1
Simple lock 		different key		63761G	63760F	x 1
serrure à crémaillère 		même combinaison	60083J	60081G		x 1

Accessories		Comments	Chrome	Silver	Gold	S.U.
Self-adhesive « finger pull » handle 	rectangular		69925G	69928K	69929L	x 10
	round			69918Y	69919Z	x 10

Kit Securitrack 3 finishes

- Upper profile 
- Sliding profile 
- Security track 
- Kit end-part locker 
- self-adhesive finger pull tabs 
- Gasket seal 



Designation	Natural anodized	BSS	GSS
1m45	607 00A	607 03D	607 02C
1m38	607 07J	607 06H	607 05G

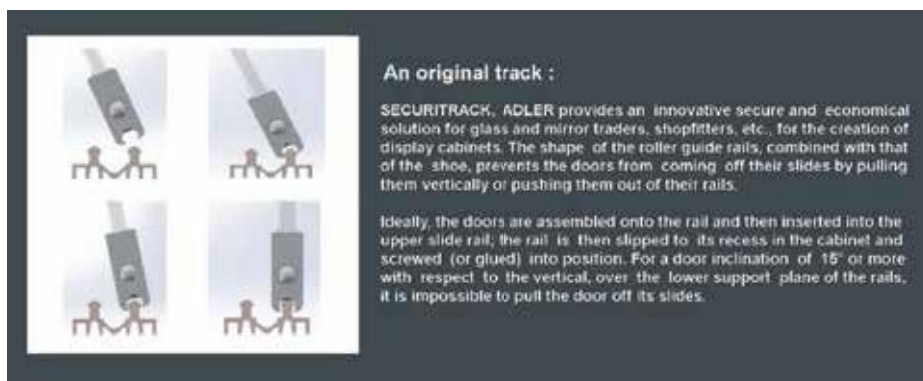
SECURITRACK

Another assembly : double rail and shoe profile



Lock button with retractable penne at the opening. It offers protection against manipulations: spacing, pullout, rotation.

Tightening aluminium on glass referring to patent Adler®.



Use the configurator to obtain a quotation and technical data:

https://www.adler-sa.fr/projets/vitrine/vitrine_1.asp

- Sliding doors
- customer area
- password

